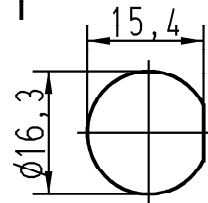


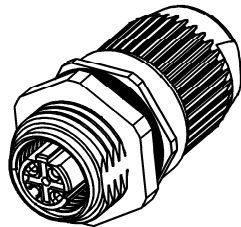
Montageausschnitt/
panel cut out

1:1



Crimpkontakte separat bestellen
Order contacts separately

Leiterquerschnitt Wire gauge	Bestell-Nr. Part-No.
AWG 22-20	61 03 000 0074



ALL Dimensions in mm Original Size DIN A 4	Techn. Character.			Nicht tolerierte Masse/ Free size tolerances
		Dat.	Name	
	Detail.	15.08.07	SUN	
	Insp.			
	Stand.			
	HARTING Electric GmbH & Co. KG D-32339 Espelkamp			Wanddurchführung M12 crimp Panel feed through M12 crimp 4polig Buchse D-kodiert geschirmt 4poles female D-coded shielded
Mod.	Dat.	Name	TB 21 03 882 2425 Sub.	

