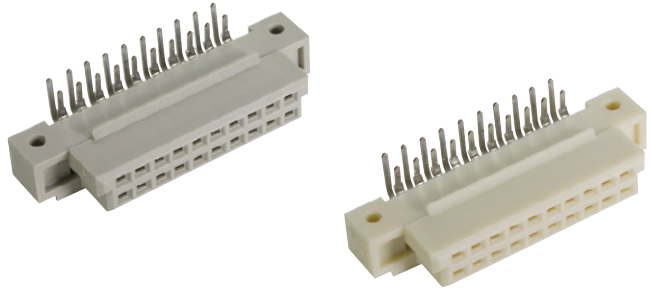


Number of contacts

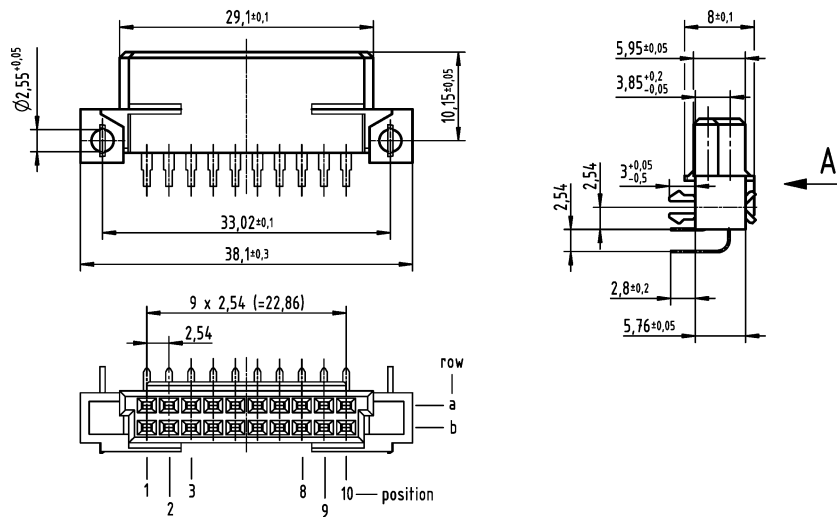
20



Female connectors

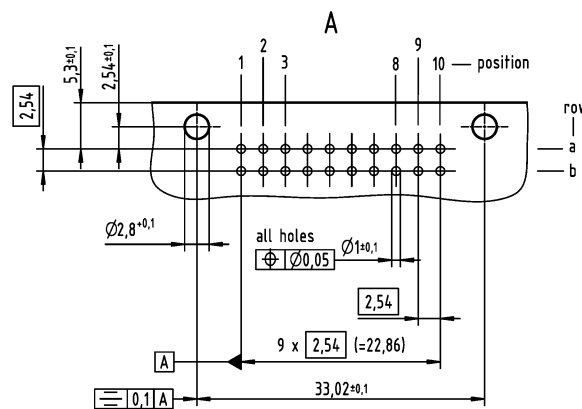
| Identification | No. of contacts | Contact arrangement | Part number 3 | Performance levels according to IEC 60 603-2. | |
|--|-----------------|---------------------|--------------------------------|--|--------------------------------|
| | | | | 2 | 1 |
| Female connector with angled solder pins THR THR on a reel | 20 | | Performance level 3 on request | 09 75 220 6801 09 75 420 6801 ^{b)} | Performance level 1 on request |
| | 20 | | | 09 75 220 6804 ^{d)} 09 75 420 6804 ^{b)d)} 09 75 220 6804 791 ^{d)} | |

Dimensions

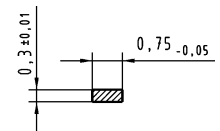


Board drillings

Mounting side



Cross section of solder terminations

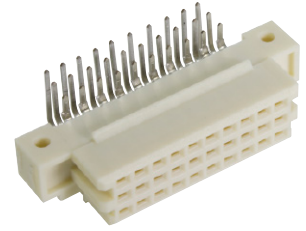


Cross area (A) of contacts row a, b:
A = 0.20 - 0.23 mm²

Dimensions in mm

Number of contacts

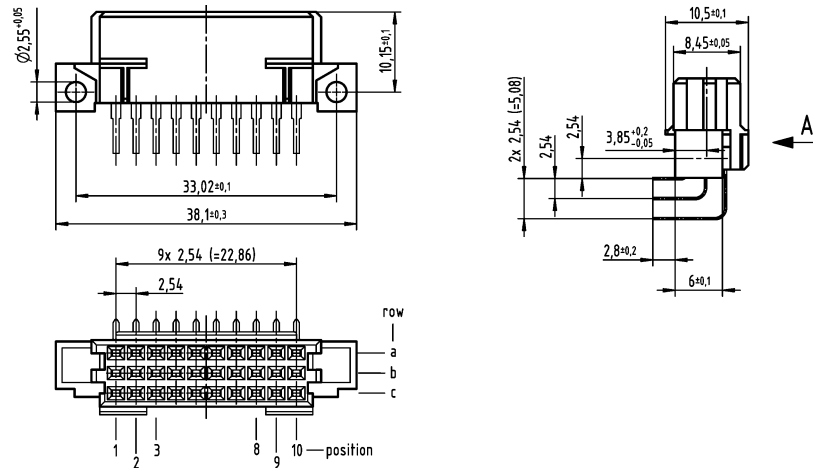
30



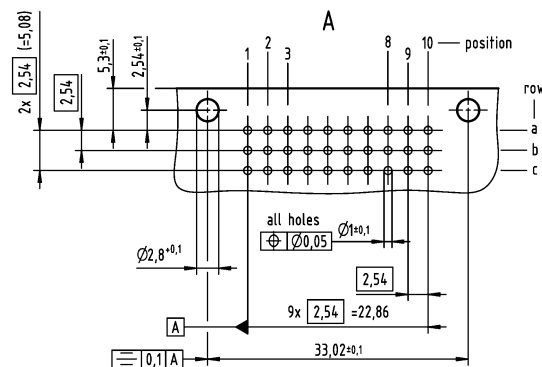
Female connectors

| Identification | No. of contacts | Contact arrangement | Part number 3 | Performance levels according to IEC 60 603-2. | |
|--|-----------------|---------------------|--------------------------------|--|--------------------------------|
| | | | | 2 | 1 |
| Female connector with angled solder pins THR THR on a reel | 30 | | Performance level 3 on request | 09 29 230 6801 09 29 430 6801 ^{b)} | Performance level 1 on request |
| | 30 | | | 09 29 230 6804 ^{d)} 09 29 430 6804 ^{b)d)} 09 29 230 6804 791 ^{d)} | |

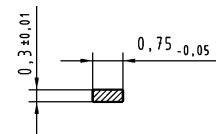
Dimensions



Board drillings
Mounting side



Cross section of solder terminations



Cross area (A) of contacts row a, b, c:
A = 0.20 - 0.23 mm²

Dimensions in mm

Other contact arrangements as well with lagging/leading pins on request
^{b)} Connectors with snap-in clips
^{d)} CTI > 400